








Monomando lavabo / Basin mixer / Mitigeur de lavabo / Torneira de lavatorio / Monocomando lavabi

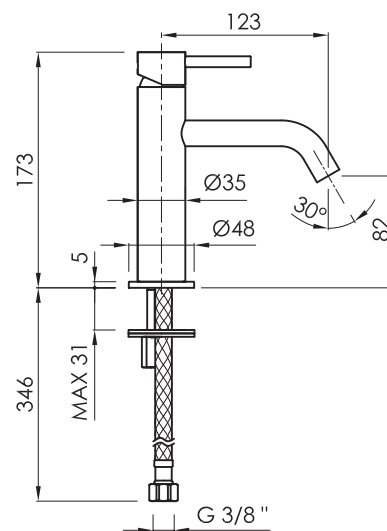
Acabados / Finishes / Finition / Acabamento / Finitura

|   |   |   |   |   |  |
|---|---|---|---|---|--|
|  | Cromado<br>Chromed<br>Chromé<br>Cromado<br>Cromato  |  | Negro mate<br>Black matt<br>Noir mat<br>Preto mate<br>Nero opaco              |  | Metal gun<br>Metal gun<br>Metal gun<br>Metal gun<br>Metal gun  |
| CR  |   | BM  |   | MG  |  |
|  | Níquel cepillado<br>Nickel brushed<br>Nickel brossé<br>Níquel escovado<br>Nichel spazzolato |  | Oro cepillado<br>Brushed gold<br>Or brossé<br>Ouro escovado<br>Oro spazzolato |  | Oro rosa cepillado<br>Brushed rose gold<br>Or rose brossé<br>Ouro rosa escovado<br>Oro rosa spazzolato |
| NB  |   | BG  |   | RG  |  |



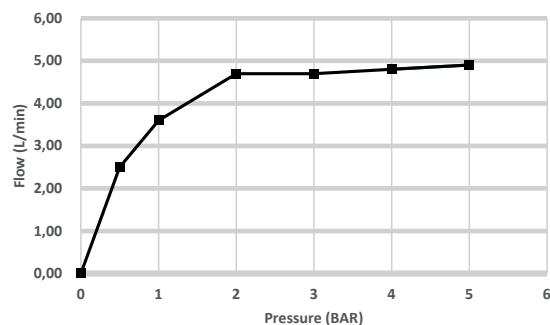
Características / Features / Caractéristiques / Características / Caratteristiche

|   |   |   |   |
|---|---|---|---|
|    | Apertura en frío<br>Cold open<br>Ouverture en eau froide<br>Abertura fria<br>Apertura a freddo                                |    | Ahorro de agua<br>Water saving<br>Économie de l'eau<br>Economia de água<br>Risparmio d'acqua                  |
|    | Ahorro de energía<br>Energy saving<br>Économie d'énergie<br>Economia de energia<br>Risparmio energetico                       |    | Cartucho SEDAL®<br>SEDAL® cartridge<br>Cartouche SEDAL®<br>Cartucho SEDAL®<br>Cartuccia SEDAL®                |
|  | Aireador NEOPERL®<br>NEOPERL® aerator<br>Aérateur NEOPERL®<br>Aerador NEOPERL®<br>Aeratore NEOPERL®                           |  | Latiguillos TUCAI®<br>TUCAI® hoses<br>Tuyau TUCAI®<br>Mangueiras TUCAI®<br>Tubi flessibili TUCAI®             |
|  | Para válvula click clack<br>For pop-up waste<br>Pour bonde click-clack<br>Para válvula click clack<br>Per valvola click clack |  | Válvula no incluida<br>Waste not included<br>Bonde non incluse<br>Válvula não incluída<br>Valvola non inclusa |



mm

Caudal / Flow rate / Débit / Fluxo / Flusso



|                   |   |     |     |     |     |     |     |
|-------------------|---|-----|-----|-----|-----|-----|-----|
| Pressure (BAR)    | 0 | 0,5 | 1   | 2   | 3   | 4   | 5   |
| Flow rate (l/min) | 0 | 2,5 | 3,6 | 4,7 | 4,7 | 4,8 | 4,9 |



BELGAQUA

| ref.     | P kg | P' kg | V cmxcmxcm |
|----------|------|-------|------------|
| MNO001.. | 0,80 | 1,04  | 27x23x6    |

P: Peso neto / Net weight / Poids net / Peso líquido / Peso netto

P': Peso de expedición / Expedition Weight / Poids d'expédition / Peso do expedição / Peso spedizione

V: Volumen de expedición / Expedition Volume / Volume d'expédition / Volume do expedição / Volume spedizione